



The **work platforms** - designed for indoor and outdoor working at height. There can be made in various types and from different materials.
Usually, the platforms for working at height are made of aluminum and can be easily transported to the working area.

Platform for working on poles with lifting accessories PLI 900

Code: PLI 900

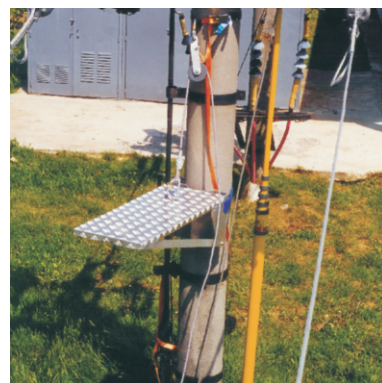
The platform for working on poles can be used for maintenance or service operations on:

- Poles for LV / MV overhead lines;
- Urban transport system poles;
- Railways poles;
- Other types of poles.

This platform can be mounted on round or rectangular poles, made of wood or concrete.

The PLI 900 platform contains the following components:

- Working platform
- Fixing system with strap and protective sleeve
- Self-blocking pulley
- Static rope for lifting the platform Ø10 mm / L = 24 m
- Automatic carabiners (2 pieces)



Technical characteristics

Perimeter of the rectangular section of the poles on which the platform can be mounted (mm)	690 ÷ 1820
Diameter of the poles on which the platform can be mounted (mm)	220 ÷ 580
Dimensions (mm)	965 x 365 x 300
Maximum load (daN)	120
Maximum load of the self-blocking pulley (daN)	30
Total weight (with fixing and pulling accessories) (kg)	14,7
Platform weight (without fixing and pulling accessories) (kg)	10,9

Wooden folding platform



The wooden folding platforms are used for works at small heights.
Due to their construction material (wood), the folding platforms have a light weight, are easy to deposit and can be used in electrical installations.

The folding platform is made in conformity with EA 0090 specification (ENEL Italy).

The wooden folding platforms are made in three types, depending on the number of steps (3...5).



Code	L40503	L40504	L40505
Number of steps	3	4	5
Platform height (m)	0,6	0,8	1